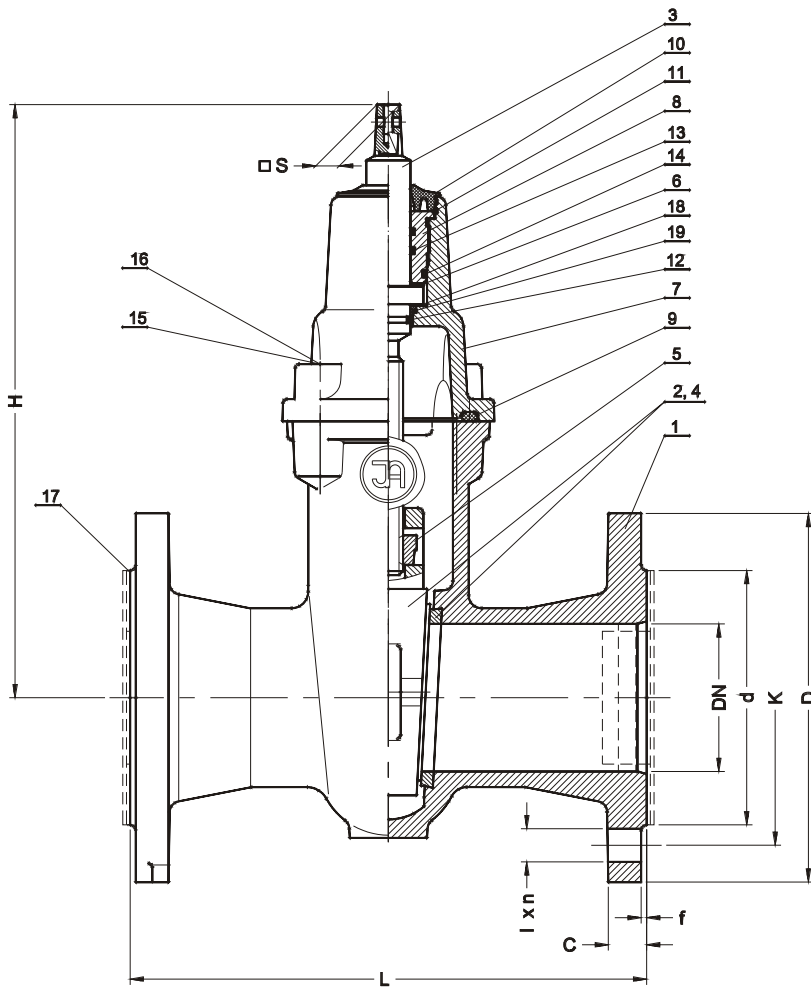


**Robinet cu sertar pana,  
corp oval**
**Wedge gate valve**
**Keilschieber**


<b>Date tehnice:</b>	<b>Technical data:</b>	<b>Technischdaten:</b>
lungime de constructie    DIN 3202 / EN 558-1 robinet cu sertar pana, corp oval 2113 - F 5 Flanse conform            EN 1092-2 Clasa de etansare - A Presiune maxima de lucru            PN 16 Temperatura maxima de lucru        120°C	Face to face length    DIN 3202 / EN 558-1 gate valve 2113 - F5 Flanges / drilled acc.    EN 1092-2 Leakproofness class - A Working pressure max.                PN 16 Working temperature max.            120°C	Bebaugslänge            DIN 3202 / EN 558-1 Keilschieber 2113 - F5 Flanschanschluß/bohrung EN 1092-2 Dichtheitsklasse - A Arbeitdruck max.                        PN 16 Arbeittemperatur max.                120°C
<b>Caracteristici de constructie:</b>	<b>Design features:</b>	<b>Baucharakteristik:</b>
Inelele de etansare ale tijeii (o-ring) pot fi schimbate fara a scoate robinetul din instalatie. Tija robinetului este din otel inoxidabil. Piulita tijeii poate fi inlocuita.  Toate partile componente sunt protejate impotriva coroziei. Executie standard: <b>PN16, 120°C, EPDM, inele etansare din alama Vopsea polivinilica RAL 7005 100 µm.</b>	O-ring spindle's gaskets - "DRY THREAD" - replaceable under pressure. Stainless steel bearing spindle with rolling thread. Replaceable spindle nut.  All parts are protected against corrosion  Standard execution: <b>PN16, 120°C, EPDM, rings of brass polyvinyl paint RAL 7005 100 µm.</b>	O-Ring Spindeldichtung - "Trocken Gewinde" - mit Unterdruckwechsellmöglichkeit gemacht. Niros-Stahl lagern Spindel mit Walzengewinde. Auswechselbar Spindelmutter.  Alle Teile sind gegen Korrosion schützen  Standardausführung: <b>PN16, 120°C, EPDM, Ringe aus Messing Polyvinylemailfarbe RAL7005 100 µm.</b>
<b>Domenii de utilizare:</b>	<b>Application:</b>	<b>Anwendung:</b>
In instalatii de apa, si alte fluide.	In instalations for water and other inert fluids to flow closing.	In Wasserlinien und andere neutrale Flüssigkeitenlinien zu Fluß verriegeln
<b>Montaj:</b>	<b>Assembly:</b>	<b>Aufstellung:</b>
Montajul se face in pozitie orizontala sau verticala.	Assembly in optional position.	Aufstellung im beliebig Position.



No.	Reper	Material
1	Corp,	EN-GJL-250, SR-EN 1561:2000
	Body,	EN-GJS-400-15, SR-EN-1563:2000
	Gehäuse	GG25 - DIN 1691, GGG40 - DIN 1693
2	Sertar,	EN-GJL-250, SR-EN 1561:2000
	Wedge, Keil	EN-GJS-400-15, SR-EN-1563:2000 GG25 - DIN 1691, GGG40 - DIN 1693
3	Tija,	Otel inoxidabil X20Cr13
	Spindle, Spindel	PN-EN 10088-1:1998 Steel, Stahl DIN 1.4021
4	Inele etansare,	Aliaj cupru,
	Ring, Ring	brass, Messing DIN 17660
5	Piulita tije,	Aliaj cupru,
	Spindle nut, Spindelmutter	brass, Messing DIN 17660
6	Saiba tija,	Teflon (Tarflen)
	Spindle washer, Spindelscheibe	
7	Capac,	EN-GJL-250, SR-EN 1561:2000
	Bonnet,	EN-GJS-400-15, SR-EN-1563:2000
	Deckel	GG25 - DIN 1691, GGG40 - DIN 1693
8	Bucsa tija,	Aliaj cupru,
	Packing cork, Dichtungskork	brass, Messing DIN 17660
9	Garnitura corp-capac,	Cauciuc, Rubber, Gummi
	Bonnet gasket , Dichtung	EPDM
10	Garnitura antipraf,	Cauciuc, Rubber, Gummi
	Clean gasket, Putzendichtung	EPDM
11	Inel opritor,	Otel, Steel, Stahl
	Stopper ring, Sicherungring	65G
12-14	Inele etansare (O-Ring),	Cauciuc, Rubber, Gummi
	Seal O-Ring, Dicht-O-Ring	EPDM
15	Organe asamblare,	Otel Fe/Zn5, otel zincat
	Screw , Schraube	SR-EN ISO 4762:2001
16	Protectie organe	Parafina
	asamblare, Screw stopper,	Paraffin
17	Capac protectie,	Polipropilena
	Stopper, Blende	Polypropylene
18	Saiba tija,	Teflon (Tarflen)
	Spindle sleeve, Spindelhulse	
19	Inele etansare (O-Ring),	Cauciuc, Rubber, Gummi
	Seal O-Ring, Dicht-O-Ring	EPDM

DN	L F 5	H	d	D	K 16 (10) Bar	I 16 (10) Bar	C	f	n 16 (10) Bar	Filet tija L.H Thread d links	□S	Masa Weight Gewicht
[mm]											[mm]	[kg]
40	240	230	88	150	110	18	18	3	4	Tr 16 x4	14	11.8
50	250	250	102	165	125	18	20	3	4	Tr 16 x4	14	13.2
65	270	285	122	185	145	18	20	3	4	Tr 16 x4	17	17.0
80	280	330	138	200	160	18	22	3	8 (4)	Tr 16 x4	17	23.8
100	300	360	158	220	180	18	24	3	8	Tr 20 x4	19	31.0
125	325	400	188	250	210	18	26	3	8	Tr 24 x5	19	43.3
150	350	455	212	285	240	22	26	3	8	Tr 24 x5	19	57.9
200	400	520	268	340	295	22	30	3	12 (8)	Tr 24 x5	24	89.8
250	450	635	320	405	355 (350)	26 (22)	32	3	12	Tr 32 x6	27	135
300	500	715	370	460	410 (400)	26 (22)	32	4	12	Tr 32 x6	27	163